

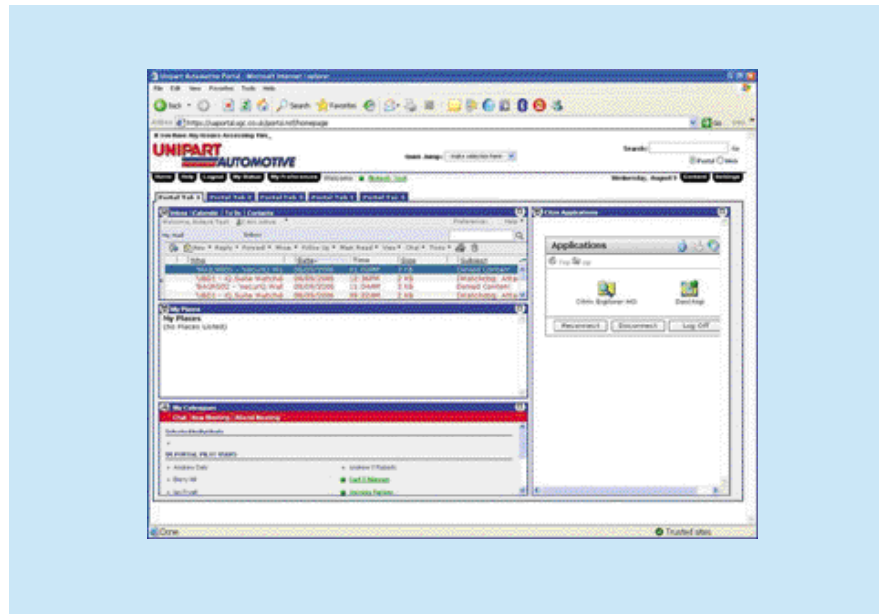
# Enabling Unipart to improve communications, raise morale and reduce costs

## PROJECT

Dynamic collaborative portal

## MARKET SECTOR

Automotive



## PROJECT OBJECTIVE

Deploy a Single Point of Web Application and Email access for all Branch and roaming user staff via a Web Browser.

Unipart Automotive wanted to integrate their web based system with a unified front end. They wanted to deploy this on their existing infrastructure, without needing to deploy any new servers.

## Obstacles needed to be overcome

- Integration with Active Directory and Internet Explorer.
- Integration with third party 2-factor authentication product.
- Low cost of implementation.
- Integration with Citrix.
- Integration with Quickplace and Sametime.

## Description of Solution

Unipart Automotive chose the BE Webportal product as a basis for their portal. Working with the customer BE Systems extended the portal to support their specific environment. The portal now brings together all of the customer's web applications into a single entry point.

## Technologies Used

Lotus Domino, Lotus Domino Web Access, Lotus Sametime, Lotus Quickplace, Citrix, SecurEnvoy, Microsoft IIS, Microsoft Active Directory.

## Benefits to the Customer

Unipart Automotive have simplified the access to the web applications that they use, whilst also increasing the amount of personalisation that each user can apply. The business areas can easily access their applications whilst still being informed of important company messages.

For further information on how Bluewave Technology can help you please contact



bluewave

Bluewave Technology Limited  
The Cubes, Suite 18 - Block D  
Beacon South Quarter  
Sandyford  
Dublin 18

email [flynch@bluewave.ie](mailto:flynch@bluewave.ie)  
tel +353 (0) 1 4773921  
web [www.bluewave.ie](http://www.bluewave.ie)

IBM Lotus software